

## Seat Belt Anchorage Test Summary

A seat belt anchorage pull test was conducted to category M1 on the seat belt anchorages of the seat specified below, to the requirements of ECE Regulation 14.09 & EC Directive 76/115/EEC as Amended by 2005/41/EC Seat Belt Anchorage. The seat and seat belt anchorages met the load requirements of ECE Regulation 14.09 & EC Directive 76/115/EEC as Amended by 2005/41/EC Seat Belt Anchorage. The test was conducted at Vehicle Occupant Safety Centre's test facility as below.

Customer	<b>DS Campers.</b>
Model	<b>DS Campers. Swivel Mechanism fitted to a Vauxhall Vivaro 2001-2014 Mk1 Passenger Double Seat.</b>
Test	<b>ECE Regulation 14.09 &amp; Directive 76/115/EEC as Amended by 2005/41/EC Seat Belt Anchorage Test.</b>
Test Number	<b>VO00435</b>
Pull Type	<b>M1</b>
Leg Type	<b>OEM Box Leg.</b>
Floor Type	<b>Fixed to a Steel Plate Structure.</b>
Leg Span	<b>n/a.</b>
Seat Mass	<b>58 kg.</b>
Seat Belt Type	<b>3 Point.</b>

This report relates to the performance of the DS Campers. Swivel Mechanism fitted to a Vauxhall Vivaro 2001-2014 mk1 Passenger Double Seat as tested on a surrogate vehicle floor. To also fit Renault Trafic 2001-2014 2<sup>nd</sup> Gen, Nissan Primastar 2001-2014. No part of this report may be amended, modified or changed in any way, unless by Vehicle Occupant Safety Centre Limited. Unauthorised amendment will render this report invalid. All component details supplied by DS Campers.

Craft Ltd

Date: 31st October 2023



Russell Edmunds  
Engineering & Technical Director



Vehicle Occupant Safety Centre

# Test Report

Customer DS Campers.

Test ECE Regulation 14.09 & EC Directive  
76/115/EEC as Amended by 2005/41/EC  
Seat Belt Anchorage Test.

Test Number VO00435

VOSC Report Number VOSC0261 Revision 0

## Vehicle Occupant Safety Centre

Author:

A handwritten signature in black ink, appearing to read 'R. Edmunds', is written over a light grey rectangular background.

R. Edmunds  
Engineering & Technical  
Director

Date:

03<sup>rd</sup> February 2026

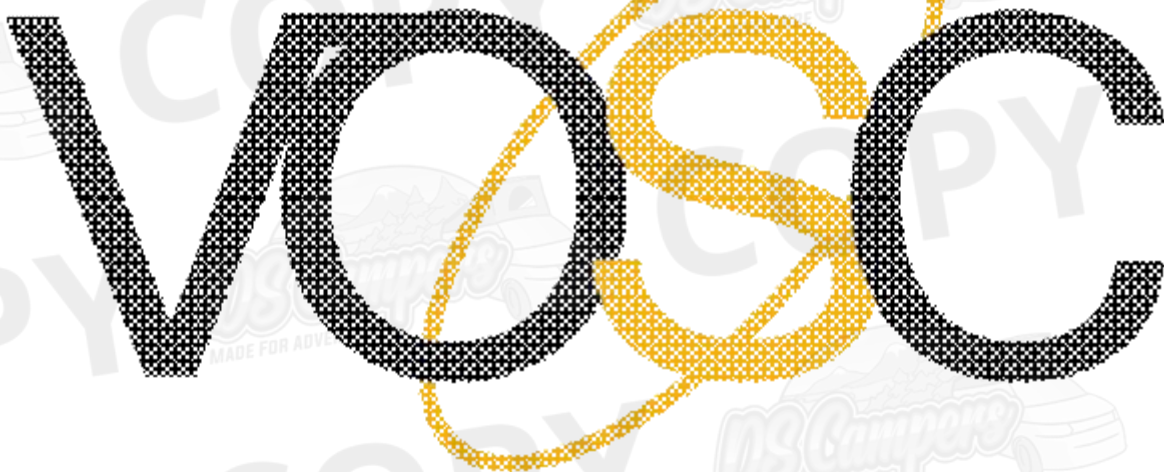
**This test report shall not be reproduced without written approval from Vehicle Occupant Safety Centre Limited – VOSC.**

VOSC Test Report No: VOSC0261 Revision 0

# Test Report

## Contents

Section	Page Numbers
Executive Summary	3 4 4 5 5 6 6 7 8 -
Distribution	14
Report Revision History	
Objectives	
Test Facility & Date	
Test Set Up	
Summary of Results	
Conclusions	
Photos	



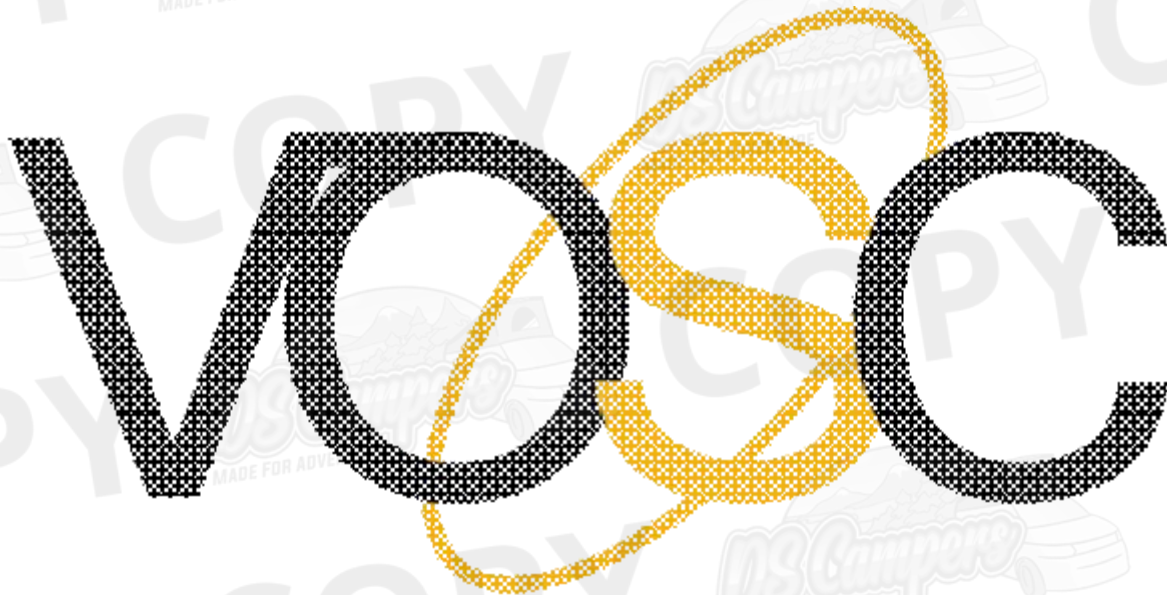
Vehicle Occupant Safety Centre

# Test Report

## Executive Summary

This Report provides details of a seat belt anchorage test conducted to ECE Regulation 14.09 & EC Directive 76/115/EEC as Amended by 2005/41/EC. The test was performed on a steel plate structure (i.e. not in vehicle) The seat tested was the Vauxhall Vivaro 2001-2014 1<sup>st</sup> Generation to include the Renault Trafic 2001-2014 2<sup>nd</sup> Gen, Nissan Primastar 2001-2014 OEM Double Passenger Seat with a DS Campers Swivel Mechanism, fitted to the steel plate. All anchorages supplied by seating Manufacturer and Surrogate B Pillar. The Test was performed to M1 standards at Vosc on 31<sup>st</sup> October 2023

The Seating System met the requirements of Regulation 14.09. Results of the tests conducted can be found within the main body of the report.



Vehicle Occupant Safety Centre

# Test Report

## Distribution

Organisation	Recipient	Format	Qty
DSCampers 37MillbrookStreet Hereford HR4 9LF 01432 267007	David Madejski	PDF	1
Vehicle Occupant Safety Centre Ltd The Science Centre, Wolverhampton Science Park, Glaiser Drive, Wolverhampton, West Midlands WV10 9RU	Contract File	PDF	1

## Vehicle Occupant Safety Centre

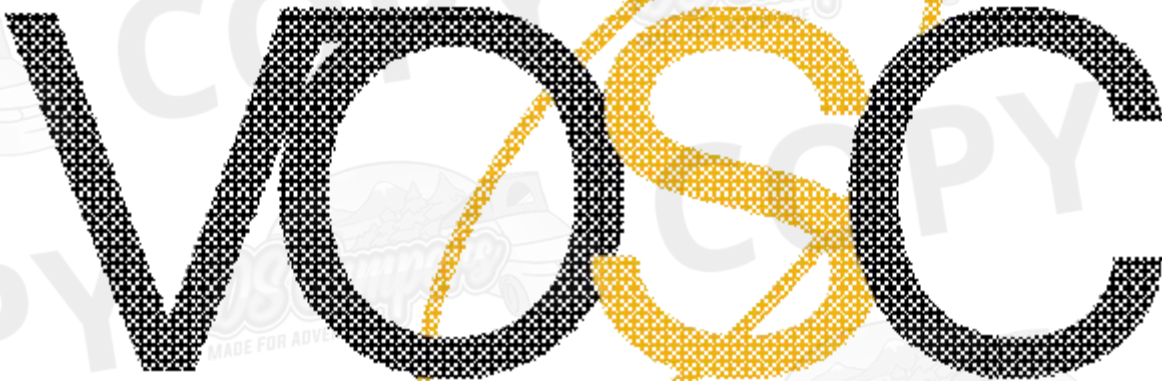
Report Revision History

Rev.	RevisionDescription	Date	Author	Approver	Pages
0	InitialRelease	17 <sup>th</sup> February 2026	R. Edmunds	R. Edmunds	All

# Test Report

## Objectives

1. To Conduct one seatbelt anchorage pull test, to the M1 requirements of ECE Regulation 14.09 & EC Directive 76/115/EEC as Amended by 2005/41/EC. The test was performed on a steel plate structure (i.e. not in vehicle) The seat tested was the Vauxhall Vivaro 2001-2014 1<sup>st</sup> Generation, to include the Renault Trafic 2001-2014 2nd Gen, Nissan Primastar 2001-2014, OEM Double Passenger Seat with a DS Campers Swivel Mechanism, all Anchorages supplied by seating Manufacturer and Surrogate B Pillar.
2. To provide a photographic record of the tests.



## Test Facility and Date

The test, numbers VO00435 was performed on 31st October 2023 in the test facility at Vehicle Occupant Safety Centre Limited.

Address: Vehicle Occupant Safety Centre Limited  
The Science Centre,  
Wolverhampton Science Park,  
Glaiser Drive,  
Wolverhampton,  
West Midlands  
WV10 9RU

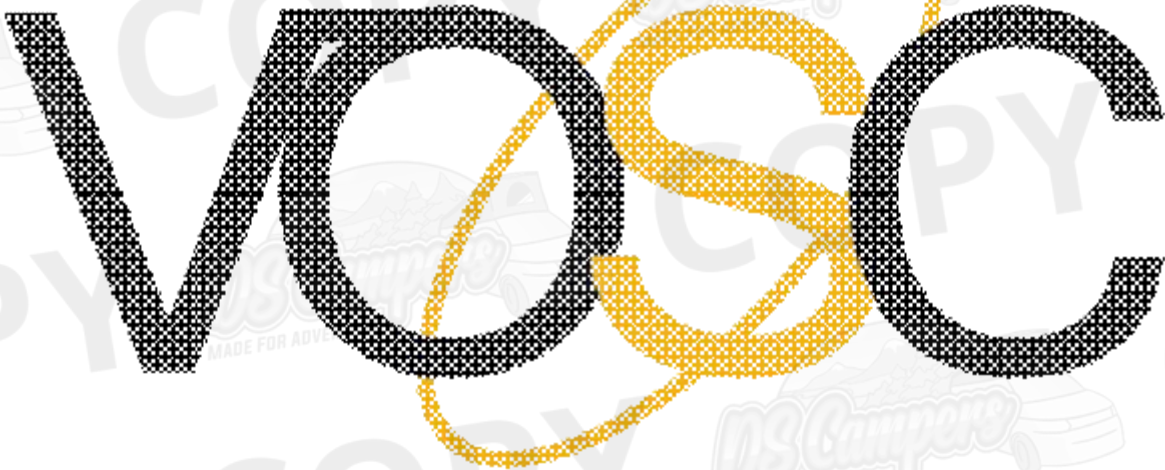
Contact: R Edmunds – Engineering & Technical Director  
Tel: 01902 287030  
Email: [engineering@voscentre.com](mailto:engineering@voscentre.com)

VCA Appraisal: Registration Number, FAUK062 VXW529695

# Test Report

## Summary of Results

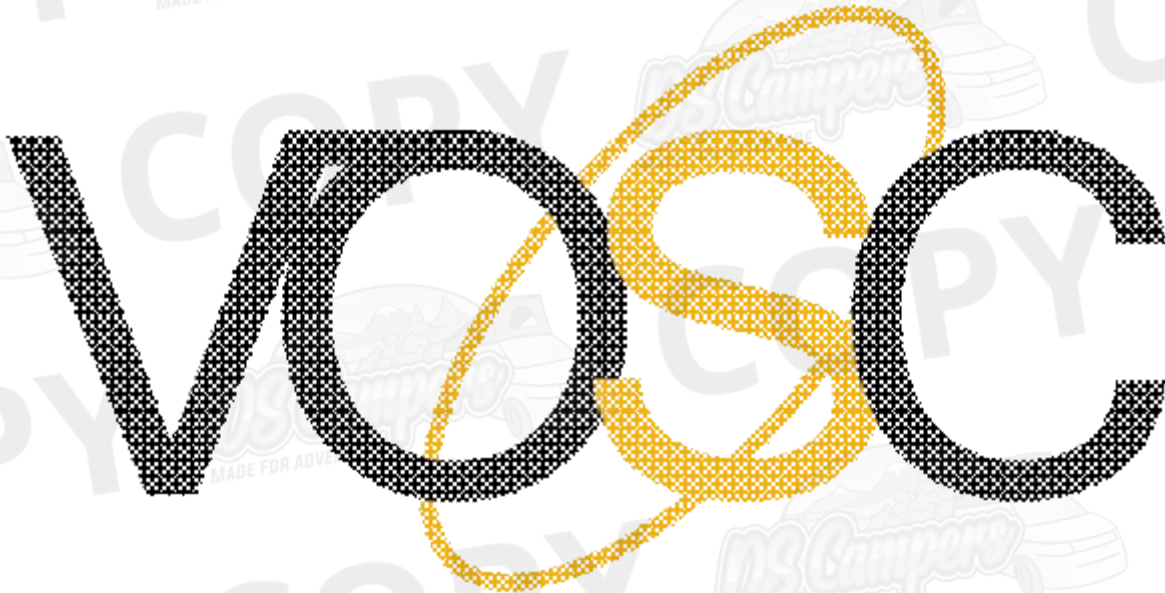
SEAT TYPE	VO00435	LOAD CELL No.	RAM Angle	LOAD CELL CAL DUE DATE	REQUIRED LOAD (KN)	PEAK LOAD (KN)	TIME TO LOAD (sec)	HOLD TIME (sec)	UPPER DISPLACEMENT (mm)
Vauxhall Vivaro OEM Passenger Seat with Swivel Mechanism 58kg									
Double Passenger Seat	LH Torso Load	5	8	17/03/2024	13.5	13.92	4.248	1.177	n/a
	LH Lap Load	6	8.3	17/03/2024	13.5	14.07	4.140	1.292	
29kg	COG	2	8.9	17/03/2024	5.69	6	4.106	1.415	
Double Passenger Seat	RH Torso Load	7	9.6	06/03/2024	13.5	13.72	5.080	0.338	290
	RH Lap Load	8	9.1	06/03/2024	13.5	13.92	4.545	0.882	
29kg	COG	10	8.2	06/03/2024	5.69	6.2	4.369	1.517	



Vehicle Occupant Safety Centre

## Conclusions

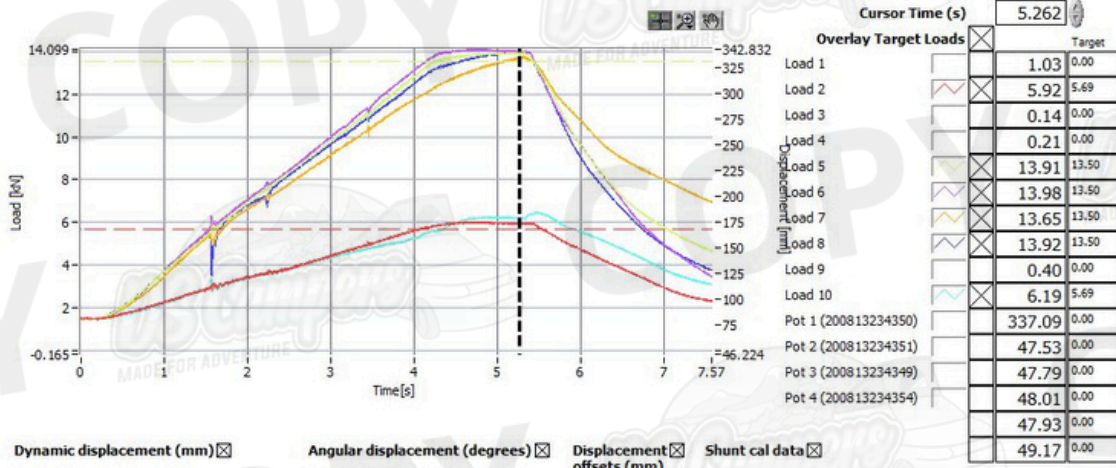
1. One seatbelt anchorages pull tests to the M1 Requirements of ECE Regulation 14.09. & EC Directive 76/115/EEC as Amended by 2005/41/EC. Were conducted on a steel plate structure (i.e. not in vehicle) on the seatbelts, the seats and seatbelt anchorages met the 100% load requirements of ECE Regulation 14.09.
2. Photographic stills can be found on pages.
3. Test Graph – Page 8
4. Pre Test – page 9 - 11
5. Post Test – Page 12 - 14



Vehicle Occupant Safety Centre

# Test Report

Test Title: VO00435  
 Description: M1 Vauxhall Vivaro OEM Passenger Seat with Swivel Mechanism  
 Date: 31/10/2023 11:47:56



**Dynamic displacement (mm)**  Show dynamic displacement for Pot 1 and Pot 1

**Angular displacement (degrees)**  Show angular displacement between Pot 1 and Pot 1 and between Pot 1 and Pot 1. Point separation (mm): 250

**Displacement offsets (mm)**  0, 0, 0, 0, 0, 0

**Shunt cal data**

Load cell	Error %	Tolerance %	Pass/Fail



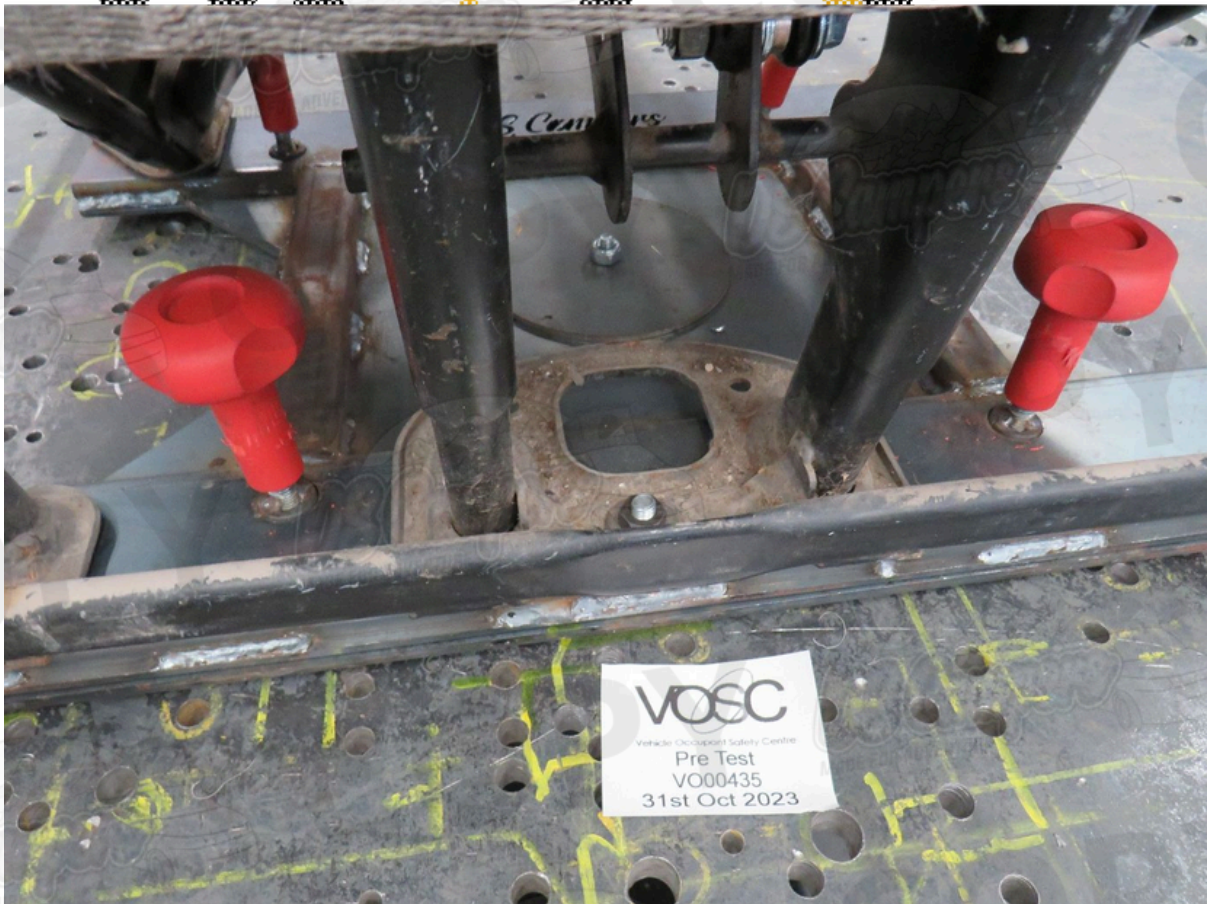
Vehicle Occupant Safety Centre



# Test Report



# Test Report



# Test Report



# Test Report



# Test Report



# Test Report

